

Local Development Framework

Local Development Scheme

November 2009

Shaping the future of Bolton

Contents

| | page |
|--|-------------|
| Local Development Framework (LDF) | 3 |
| Local Development Scheme (LDS) | 3 |
| Annual Monitoring Report (AMR) | 3 |
| Regional Planning Context | 3 |
| Statement of Community Involvement (SCI) | 4 |
| Development Plan Documents (DPD) | 4 |
| Core Strategy DPD | 4 |
| Allocations DPD | 4 |
| Supplementary Planning Documents (SPD) | 4 |
| Unitary Development Plan Saved Policy | 4 |
| Supplementary Planning Guidance | 5 |
| Greater Manchester Joint Waste Development Plan Document | 5 |
| Greater Manchester Joint Minerals Development Plan Document | 7 |
| Conformity | 9 |
| Sustainability Appraisal | 9 |
| Resources | 9 |
| Risk | 10 |
| Monitoring and Review | 10 |
| Appendix 1 Relationship between Local Development Documents | 11 |
| Appendix 2 Evidence Base | 12 |
| Appendix 3 “Saved” UDP Policies and incorporation into the emerging Local Development Framework | 18 |
| Appendix 4 Existing & Proposed Planning Policy Guidance | 21 |
| Appendix 5 Local Development Document Profiles | 23 |
| Appendix 6 Local Development Document Summary Table | 33 |
| Appendix 7 Summary Timetable | 35 |

The Local Development Framework (LDF)

The Bolton Unitary Development Plan 2005 (UDP) allocates land for various uses and sets criteria for the determination of planning applications. Under the 2004 Planning and Compulsory Purchase Act, Unitary Development Plans are to be gradually replaced with a bundle of documents collectively called a Local Development Framework, the various aspects of which are outlined below.

The LDF will be a key component in the delivery of the Bolton Community Strategy entitled: 'Bolton Our Vision 2007-2017' and the various components of the Local Development Documents will express the elements of the strategy which relate to the development and use of land.

Local Development Scheme (LDS)

This is a programme document for the LDF and sets out the documents the Council needs to prepare over the next three years with timescales and milestones for their preparation. This includes transitional arrangements for carrying forward existing UDP policy and related Supplementary Planning Guidance (SPG) into the new framework. The first Local Development Scheme was published in March 2005 and covered the period to March 2008. It has been revised several times since it was first produced, most recently in March 2009. This Local Development Scheme covers the period up to October 2012. A summary timetable and programme chart are contained in the appendices 6 and 7 respectively.

Annual Monitoring Report (AMR)

The Council is required to prepare an Annual Monitoring Report (AMR) for submission to the Secretary of State. The AMR should contain information on the progress of the LDF as set out in Local Development Scheme (LDS) and the extent to which policies set out in the Local Development Documents, including saved policies, are being achieved. The fourth AMR was published in December 2008.

Regional Planning Context

Regional Spatial Strategy (RSS) provides a strategic context for the Local Development Framework. The current RSS for the North West was published in September 2008. A partial review of RSS considering the future accommodation needs of Gypsy and Traveller, and Travelling Showpeople communities and revisions to Regional Car Parking Standards

has reached its draft submission stage. This will then go through an examination in public with final publication in November 2010.

The Statement of Community Involvement (SCI) sets out how the Council will engage the community in the preparation of Local Development Documents and the Council's procedures for public involvement in planning policy development and development control decisions. It is also subject to public consultation and independent examination. The SCI was adopted in February 2007.

Development Plan Documents (DPD) will set out the Council's policies for the borough's development and use of land and form the primary criteria in determining planning applications. All DPDs must conform to the provisions of the Council's SCI and will be subject to examination by the Planning Inspectorate before adoption. Where relevant these will comprise a Core Strategy, Development Control Policies, Land Allocations, Proposals Map, Area Action Plans and specific policy plans.

Core Strategy DPD: will set out the Council's vision and spatial strategy for future development to 2026 and will include Development Management policies, a Key Diagram and allocations for major development. Preparatory work commenced in October 2006 with adoption intended for March 2011. See Appendix 5.

Allocations DPD: will set out land allocations for a range of relevant future uses which may include housing, employment, mixed use, retail development and community facilities. It will also identify areas of protection such as Green Belt and Conservation Areas. See Appendix 5.

Supplementary Planning Documents (SPD) provide detailed guidance on site specific or topic areas and are not the subject of independent examination. They do not carry development plan status but are a material consideration in the determination of planning applications. A list of proposed SPDs is contained in Appendix 4 and profiles in Appendix 5.

Unitary Development Plan

Saved Policy: A transitional period is allowed for existing statutory plans to be 'saved' for 3 years or longer with approval from the Secretary of State, enabling relevant existing policy to be carried forward into the new system.

The Bolton Unitary Development Plan (UDP) was adopted in April 2005. In 2008, the 2005 plan was saved in its entirety and it will be replaced in due course by Development Plan Documents and Supplementary Planning Documents.

A list of the saved policies and where these may be incorporated into LDF documents can be found at Appendix 3. This should not be taken to suggest that policies will automatically be carried forward into future LDF documents, rather that the issues covered by them and the need for continued policies will be considered through work on new documents including the results of evidence gathering and consultation.

Supplementary Planning Guidance

A review has been carried out of all the existing SPG and it is proposed that this guidance will gradually be carried forward into replacement Supplementary Planning Documents. See Appendix 4.

Bolton Metropolitan Borough Council, Bury Metropolitan Borough Council, Manchester City Council, Oldham Metropolitan Borough Council, Rochdale Metropolitan Borough Council, Salford City Council, Stockport Metropolitan Borough Council, Tameside Metropolitan Borough Council, Trafford Metropolitan Borough Council and Wigan Metropolitan Borough Council Development Plan Document

Greater Manchester Joint Waste Development Plan Document (“the JWDPD”)

Introduction

Under the provisions of the Planning and Compulsory Purchase Act 2004 agreement has been reached across the Greater Manchester sub-region by Bolton Metropolitan Borough Council, Bury Metropolitan Borough Council, Manchester City Council, Oldham Metropolitan Borough Council, Rochdale Metropolitan Borough Council, Salford City Council, Stockport Council, Tameside Metropolitan Borough Council, Trafford Metropolitan Borough Council and Wigan Metropolitan Borough Council to produce a joint waste development plan document (JWDPD) for Greater Manchester. The Greater Manchester Authorities consider that this arrangement offers the most potential for effective joint working in the production of the Waste Development Plan Document and is the preferred approach to implementing the principles of sustainable waste management for all waste streams.

Context

The area of Greater Manchester has the largest population within the North West of England, and as a consequence is the Region's largest producer of waste for all waste streams, including Municipal Solid Waste (MSW), Commercial and Industrial (C&I), Construction and Demolition Waste (C&D) and Hazardous Waste. In 2004/2005, total waste arisings for Greater Manchester were estimated to be over 8 million tonnes.

Greater Manchester has traditionally relied upon landfill as its main source of waste management. Nevertheless, as a result of European legislation, Government targets, increasing waste generation, the need for improved environmental protection and rising public expectations, there is a need for rapid changes in the sub-region's approach to waste management.

Sufficient landfill capacity will still be required for final residues following treatment and recovery. However, there is a recognised need to reduce our reliance on this disposal option by providing alternative waste management facilities for recycling, composting, reprocessing, treatment and disposal of waste.

The JWDPD for Greater Manchester will seek to ensure that the right mix of sites is identified to maximise the potential for driving waste management up the waste hierarchy.

It is anticipated that the JWDPD will take approximately five years to produce and will be adopted by January 2012.

Current Waste Policies and Status

The waste policies which apply to Greater Manchester are contained within the Regional Spatial Strategy (RSS) for the North West and each of the ten Greater Manchester authority's Unitary Development Plans (UDPs).

The RSS for the North West of England was published on 30th September 2008. The RSS forms part of the development plan for each of the 10 Greater Manchester authorities and the policies and proposals for waste management set out in the JWDPD must be in line with the RSS.

In order to provide coverage during the plan preparation period, the provision of the Planning and Compulsory Purchase Act (2004) allows for policies in UDPs to be saved for at least 3 years from the commencement of the Act, or until such time as they are replaced by a DPD. Once the JWDPD has been adopted it will be integrated into the LDF of each of the ten local authorities and will replace the waste policies contained within the UDP. The document will then provide the basis for the provision of new waste management facilities across Greater Manchester.

Bolton Metropolitan Borough Council, Bury Metropolitan Borough Council, Manchester City Council, Oldham Metropolitan Borough Council, Rochdale Metropolitan Borough Council, Salford City Council, Stockport Metropolitan Borough Council, Tameside Metropolitan Borough Council, Trafford Metropolitan Borough Council and Wigan Metropolitan Borough Council Development Plan Document

Greater Manchester Joint Minerals Development Plan Document (“the JMDDP”)

Introduction

Agreement has been reached across the Greater Manchester sub-region by Bolton Council, Bury Council, Manchester City Council, Oldham Council, Rochdale Council, Salford City Council, Stockport Council, Tameside Council, Trafford Council and Wigan Council to prepare a joint Development Plan Document, the Greater Manchester Joint Minerals Development Plan Document (JMDDP). The JMDDP is Greater Manchester’s preferred approach to implementing the principles of Minerals Planning Statement 1: Planning for Minerals.

Context

The level of minerals produced within the area of Greater Manchester has been fairly steady over recent years. The area of Greater Manchester has the largest population within the Northwest, and has seen an increase in the activity of the construction industry over recent years through residential and retail/commercial and industrial development. This means the area is placing a high demand on the supply of raw materials. However, Greater Manchester is not self sufficient in the production of the primary minerals required to sustain this activity. Consequently the area has relied upon imports of materials from neighbouring areas.

Coinciding with the increase in construction activity is that of demolition, indicating an increase in the level of construction and demolition waste produced. This material can be processed for use as recycled aggregate, thereby reducing the need for primary aggregates.

The North West Regional Spatial Strategy (RSS) sets out the framework for the development minerals within the North West of England for the next 15-20 years. It expresses the requirements of national policy in the context of regional resources and needs, and informs the development of Local Development Frameworks.

RSS apportions the aggregate mineral supply for the region which is informed by the Regional Aggregate Working Party (RAWP). The agreed regional apportionment of land-won aggregates to 2016 in the North West is 55 million tonnes of sand and gravel, and 167 million tonnes of crushed rock. This is broken down to produce a sub-regional apportionment for Greater Manchester, Merseyside, Halton and Warrington of 4.1 million tonnes of sand and gravel, and 26 million tonnes of crushed rock from 2001 – 2016.

Current Minerals Policies and Status

The Minerals policies which apply to the area of Greater Manchester are to be found in the Regional Spatial Strategy for the North West as well as policies contained within each of the 10 Greater Manchester authority's Unitary Development Plans (UDPs). The JMDPD will eventually replace the Minerals policies contained within the UDPs and will provide the basis for the provision for a steady and sustainable supply of minerals to meet the region's needs.

Conformity

The Local Development Framework must be internally consistent: land allocations, development management policies and supplementary planning documents must be in conformity with the Core Strategy.

Local Development Documents must be in conformity with national Planning Policy Statements (PPS) and with the North West Regional Spatial Strategy (RSS). Local Development Documents and Regional Spatial Strategies must all meet the requirements of EU legislation on Strategic Environmental Assessment.

Sustainability Appraisal

All Development Plan Documents, apart from the Statement of Community Involvement, will be subject to sustainability appraisal throughout the process including the production of an appraisal report. This incorporates Strategic Environmental Assessment required by European environmental legislation to ensure they reflect sustainable development principles.

Resources

The production of documents forming the LDF will be led by Spatial Planning Team in the Development & Regeneration Department and comprises 1 Team Leader, 2 Principal Planning Officers, 1 Career Grade Planning Officer and 1 Planning Technician. The Planning Research Team will have overall responsibility for the information base.

This staff resource must also balance the preparation of the LDF with other Council and Departmental work such as, participation in the preparation of Sub-Regional and Regional Spatial Planning, responding to consultations on new Government Guidance and advising on planning applications with policy implications.

This section will have overall responsibility for the production process but will receive support from other departmental sections, and Council departments as appropriate. Consultants will be engaged on specific projects where there is a lack of expertise or capacity in-house.

Risk

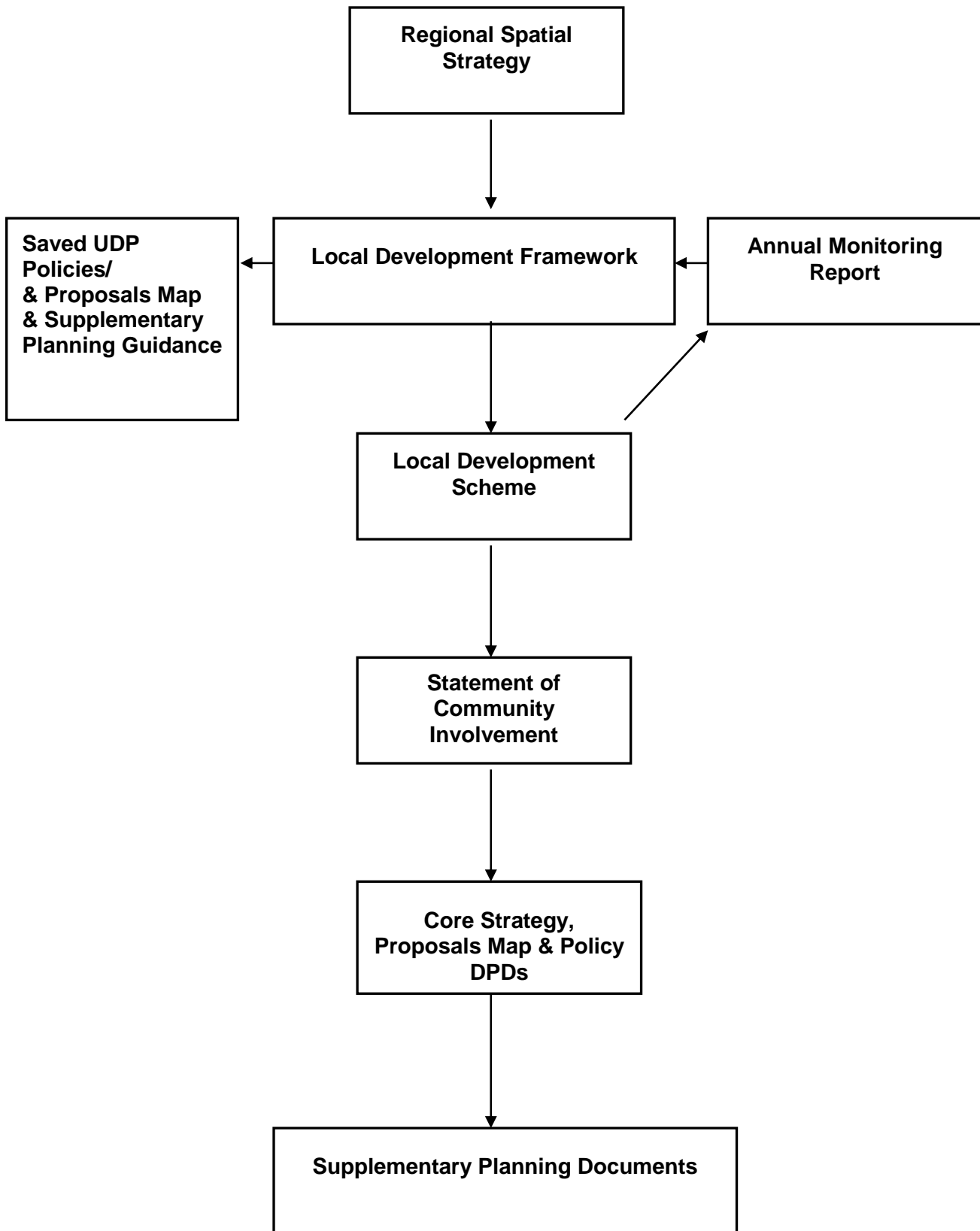
The Council seeks to minimise the risk of additional expense and delay. Key risks are:

- external change identified above which the Council will address by ensuring that long-life documents focus on essentials and are flexible enough to be adaptable to change and anticipating change;
- procedural complications and slippage which the Council will address by maintaining robust information and ensuring that plans are sound;
- resource issues such as staff retention, specialist advice and document and map production, which the Council will address by making sufficient resources available;
- stakeholder commitment issues which the Council will address with commitment to community involvement.
- risk of non conformity of the LDF with the Regional Spatial Strategy and non conformity of documents with the LDF Core Strategy. Careful timetabling of DPD production within the LDS should minimise the risk of subsequent documents being found to be unsound. The Inspector's Report on Bolton's proposed Core Strategy will also be taken into account in the timing of the later stages of the Allocations DPD.

Monitoring and Review

Circumstances will inevitably change during the LDS period with changing priorities at national, regional and local level. These have been addressed in the 2008 Annual Monitoring Report that was produced in December 2008 and this Local Development Scheme takes into account the AMR's findings.

Appendix 1 Relationship between Local Development Documents



Appendix 2: Evidence Base

National Evidence Base and Strategies

National Evidence

- DCLG (2007) *Indices of Multiple Deprivation*
- Jenkins, G.J., Perry, M.C., and Prior, M.J.0 (2007). *The climate of the United Kingdom and recent trends*. Met Office Hadley Centre, Exeter, Securing the Future - UK Government sustainable development strategy (2005)
- EU Water Framework Directive, (transposed into UK law 2003)

National Strategies

- Planning Policy Statements (PPS) were produced by the Office of the Deputy Prime Minister (ODPM) until 05/05/2006, after which they were produced by the Department for Communities and Local Government (DCLG). They include:
 - PPS1: Delivering Sustainable Development (2005) and Supplement: Planning and Climate Change (2007)
 - PPS3: Housing (2006)
 - PPS4: Planning for Sustainable Economic Development (2007)
 - PPS6: Planning for Town Centres (2005)
 - PPS7: Sustainable Development in Rural Areas (2004)
 - PPS9: Biodiversity and Geological Conservation (2005)
 - PPS10: Planning for Sustainable Waste Management (2005)
 - PPS11: Regional Spatial Strategies (2004)
 - PPS 12: Local Spatial Planning (2008)
 - PPS 22: Renewable Energy (2004)
 - PPS 23: Planning and Pollution Control (2004)
 - PPS 25: Development and Flood Risk (2006)
- MPS1 Minerals Policy Statement (2006)
- Planning Policy Guidance (PPG) Notes were produced by the Office of the Deputy Prime Minister. They include:
 - PPG2: Green Belts (2001)
 - PPG5: Simplified Planning Zones (1992)
 - PPG8: Telecommunications (2001)
 - PPG13: Transport (2001)
 - PPG14: Development on Unstable Land (1990)
 - PPG15: Planning and the Historic Environment (1994)
 - PPG16: Archaeology and Planning (1990)
 - PPG17: Planning for Open Space, Sport and Recreation (2002)
 - PPG18: Enforcing Planning Control (1991)
 - PPG19: Outdoor Advertisement Control (1992)
 - PPG24: Planning and Noise (1994)

Other National Strategies include:

- *Housing Issues:*
 - a. DCLG (2005) *Sustainable Communities: Settled Homes, Changing Lives, a Strategy for Tackling Homelessness*
 - b. DCLG (2005) *Providing more Settled Homes*
 - c. DCLG (2006) *Preventing Homelessness: A Strategy Health Check.*
- Planning Circulars produced by the DCLG
 - *Circular 01/2006 Planning for Gypsy and Traveller Caravan Sites*
 - *Circular 04/2007 Travelling Show People*
 - *Circular 05/2007 Planning Obligations*
 - DCLG (2006) *Good Practice Guide on Planning for Tourism*
 - DCLG (2008) *Sustainable Development Action Plan 2007-2008*
 - Natural England (2000) *Planning Tomorrow's Countryside*

Regional Evidence Base and Strategies

Regional Evidence

- Highways Agency (2007) *Highways Agency Advice Forecasts*
- North West Regional Assembly (2005) *North West Employment Land Study*
- 4NW (2008) *Towards Broad Areas for Renewable Development.*

Regional Strategies

- CLG North West of England Plan, Regional Spatial Strategy to 2021 (Sept 2008)
- Moving Forward: The Northern Way (consisting of the North West Regional Development Agency, One NorthEast and Yorkshire Forward). Key documents include:
 - *The Northern Way Growth Strategy*
 - *The Business Plan 2005-2008*
 - *Action Plan 2005*
 - *Annual Report and Submission to the Government on the comprehensive spending review 2007.*
- North West Regional Assembly (2005) *Regional Housing Strategy*
- North West Regional Assembly (2007) *North West Housing Statement*
- North West Regional Development Agency (2006) *North West Regional Economic Strategy*

Sub-Regional Evidence Base and Strategies

Sub-regional Evidence

Housing Evidence:

- Association of Greater Manchester Authorities (2007) *Making Housing Count*.
- Association of Greater Manchester Authorities (2008) *Greater Manchester Strategic Housing Market Assessment, Deloitte and GVA Grimley*

Employment Evidence:

- Manchester Enterprises (2006) *Demand for Employment Land in Greater Manchester*
- Manchester Enterprises (2006) *Assessment of Employment Land in Greater Manchester*
- Association of Greater Manchester Authorities *Greater Manchester Employment Land Position Statement (expected June 2009)*

Other evidence:

- Association of Greater Manchester Authorities (2007) *Greater Manchester Waste Needs Assessment*.
- Association of Greater Manchester Authorities (2008) *Greater Manchester Flood Risk Assessment*.
- Association of Greater Manchester Authorities. *Decentralised energy and zero carbon buildings in spatial planning (Expected April 2009)*
- Greater Manchester Archaeological Unit (2008) *Greater Manchester Urban Historic Landscape Characterisation Project*.
- Association of Greater Manchester Authorities (2008) *Housing Growth Points Bid*
- Association of Greater Manchester Authorities *Modelling the Transport Impacts of the Greater Manchester Local Development Framework (expected June 2009)*

Sub-Regional Strategies

- Environment Agency (2008) *River Douglas Catchment Flood Management Plan*
- Environment Agency (2008) *River Irwell Catchment Flood Management Plan*
- Greater Manchester Passenger Transport Authority (2006) *Greater Manchester Local Transport Plan 2 and associated strategies including Cycling Strategy: 2006/7-2010/11*.
- Manchester Enterprises (2006) *The Manchester City Region Development Programme 2006: Accelerating the Economic Growth of the North*

Local Evidence Base and Strategies

Local Evidence

Housing:

- Bolton Council (2006) *Strategic Homeless Review 2006-07*
- Bolton Council and David Couttie Associates (2007) *Housing Market and Needs Survey 2006*.
- Bolton Council and Roger Tym and Partners (2008) *Bolton Strategic Housing Land Availability Assessment*.
- Bolton Council and David Couttie Associates (2009) *Bolton Strategic Housing Market Assessment*.
- Bolton Council. *Viability Study for Affordable Housing (expected June 2009)*
- Bolton Council also produces Annual Housing Land Availability Reports

Employment:

- Bolton Council (2007) *Development and Regeneration Position Statement*.
 - Bolton Council, ARUP and Keppie Massie (2008) *Bolton Employment Land Study*
 - Bolton Council also produces Annual Employment Land Availability Assessments.
-
- Bolton Council (2007) *Development and Regeneration Position Statement*.
 - Bolton Council and Roger Tym and Partners (2008) *Bolton Retail and Leisure Study*.
 - Bolton Council also produces Annual Town Centre Vitality and Viability Reports.

Environment:

- Bolton Council (2007) *Open Space, Sport and Recreation Study: Assessment Report*.
- Bolton Council (2008) *Bolton Air Quality Management Area*
- Bolton Council. *Strategic Flood Risk Assessment – level 1 additional work and level 2 increased scope work (expected June 2009)*
- Information about Bolton's Air Quality Management Zone can be found at www.airquality.co.uk
- Greater Manchester Archaeological Unit (2008) *Bolton Urban Historic Landscape Characterisation Project*.
- Manchester University (2008) *Re-shaping Bolton for a Changing Climate*.

Transport:

- Bolton Council and JMP Consulting (2004) *Bolton Transport Study*
- Bolton Council (2007) *Great Lever and Farnworth Neighbourhood Management Areas: Accessibility Audit*.
- Bolton Council (2008) *Public Transport Accessibility Mapping*
- Census (2001) *Travel to Work in Bolton Data*.
- Greater Manchester Passenger Transport Authority (2007) Greater Manchester Integrated Transport Strategy, Corridor Partnership No. 7 Manchester-Salford Central-Farnworth-Bolton-Lostock/Bromley Cross
- Greater Manchester Transportation Unit (2006) *Transport Statistics Bolton 2005*
- Greater Manchester Transportation Unit (2007) *Transport Statistics Bolton 2006*.
- Greater Manchester Transportation Unit (2008) *Accidents at Junctions Data*

Health:

- Bolton NHS Primary Care Trust (2001) *The Bolton Health Survey 2001*
- Bolton NHS Primary Care Trust (2005) *Public Health: Annual Report 2005*
- Bolton NHS Primary Care Trust (2007) *The Bolton Health Survey 2007*

Children and Education:

- Bolton Council (2008) *A Vision for Lifelong Learning, 14-19 year olds.*
- Bolton Council (2008) *Every Child Matters in the Bolton Family, Children and Young Peoples Plan 2007-2010*

Other:

- Bolton Council also produces Annual Monitoring Reports, which include information about progress on the LDF and key facts and figures monitoring.
- Bolton Council (2007) *Bolton Mills Action Framework: Guidance for the Future Role of Bolton's Mills*
- * Bolton Council (2007) *Ward Profiles*
- National land use database

Views of the Local Community

- Bolton Council (2007) *Council responses to comments made on the Key Issues Report and Withdrawn Housing DPD Document*
- Bolton Council (2008) *Council responses to comments made on the Issues and Options Report*
- Bolton Council (2008) *Council responses to comments on the Core Strategy Preferred Options Document, (under preparation).*
- *Other reports will be prepared and made available throughout the process.*

Local Strategies**Strategic Council Wide:**

- ** Bolton Council (2007) *Sustainable Community Strategy. Bolton: Our Vision 2007-2017.*
- Bolton Council (2008) *Things are Looking Up for 2008-2011 The Bolton Plan 2006-2009:*
- Bolton Council (2008) *Bolton's Local Area Agreement 2008-20011.*

- Bolton Council (2007) *Statement of Community Involvement.*

Economy:

- Bolton Vision Partnership (2005) *Town Centre Action Framework 2005-2008.*

Transport:

- Bolton Council (2007) *Coming to Bolton: Town Centre Transport Strategy.*

Housing:

- Bolton Council (2005) *Supporting People Strategy (Supported Housing Strategy) 2005-2010, also related strategies for BME Housing Support and Affordable Warmth*
- Bolton Council (2007) *Homelessness Strategy 2007-2010*
- Bolton Council (2006) *Looking Forward: A Gypsy and Traveller Strategy for Bolton 2006-2011.*
- Bolton Council (2006) *Bolton Temporary Accommodation Use Reduction Plan*

- Bolton Council (2007) *Housing Strategy 2007-2010 (currently being updated)*
- Bolton Council (2007) *Affordable Housing Delivery Plan 2007-2010*
- Bolton Council (2007) *Joint Housing Plan for Older People in Bolton 2007-2010*

The Environment:

- Bolton Council (2006) *Our Future: Environment Strategy 2006-2011*

Area Specific:

- Bolton Council (2006) *Bolton's Neighbourhood Renewal Strategy: Improving our Neighbourhoods, Changing our Lives.*

Health:

- Bolton NHS Primary Care Trust (2007) *Estate Strategy Review*
- Bolton NHS Primary Care Trust (2008) *Building Better Health for Bolton: Strategic Service Delivery Plan.*
- Bolton NHS Primary Care Trust (2006) *Better Health for Bolton: A Manifesto for Improving Health Services 2006-2009.*

Other:

- Bolton Council (2006) *Bolton 2011: 5 Year Tourism Development Plan 2006*
- ***BSAFE Partnership (2005) *Crime, Disorder and Drugs Misuse Reduction Strategy 2005-2008.*
- Other Local Planning Authorities Local Development Plan Documents

The above list is not intended to be exhaustive but contains key elements of the Evidence Base to date.

Notes

* This is based on Census Data (2001). The Wards in Bolton are Astley Bridge, Bradshaw, Brightmet, Bromley Cross, Crompton, Farnworth, Great Lever, Halliwell, Harper Green, Heaton and Lostock, Horwich and Blackrod, Horwich North East, Hulton, Kearsley, Little Lever and Darcy Lever, Rumworth, Smithills, Tonge with the Haulgh, Westhoughton North and Chew Moor and Westhoughton South.

** BSEP was set up as part of the Vision for the Future group (Bolton's Local Strategic Partnership) specifically to provide a lead on the economic development of the Borough. It combines representatives from the private, voluntary and public sectors as well as local political representatives. One of the main tasks of BSEP is to periodically review the Borough's Economic Development Strategy, checking on the health of the local economy, guiding changes and putting forward ways in which improvements can be made.

*** The Primary members of BSAFE are Bolton Metropolitan Borough Council, Greater Manchester Police, Greater Manchester Probation Service – Bolton, Greater Manchester Police Authority, Bolton Primary Care Trust, Greater Manchester Fire and Rescue Service, Bolton, Salford and Trafford Mental Health Trust and HMP Forest Bank.

Appendix 3: Saved UDP Policies & Incorporation into LDF

| | Saved Policy | Local Development Framework |
|------------------------|---|--|
| Part 1 Policies | | |
| | | |
| R1 | Countryside and Rural Economy | Core Strategy |
| G1 | Green Belt | Core Strategy |
| N1 | Nature Conservation | Core Strategy |
| EM1 | Environmental Management | Core Strategy |
| D1 | Design and Built Environment | Core Strategy |
| O1 | Open Space and Recreation | Core Strategy |
| A1 | Accessibility | Core Strategy |
| H1 | Housing | Core Strategy |
| CP1 | Community provision | Core Strategy |
| E1 | Employment and the Economy | Core Strategy |
| S1 | Retail and Leisure | Core Strategy |
| TC1 | Town Centres | Core Strategy |
| M1 | Minerals | Core Strategy |
| W1 | Waste | Core Strategy |
| | | |
| Part 2 policies | | |
| | | |
| R2 | Protected Open Land | Allocations DPD |
| R3 | Diversification in the Countryside | Covered by PPS7 |
| R4 | Agricultural Land | Core Strategy and Allocations DPD |
| R5 | Landscape Character | Core Strategy and Allocations DPD |
| G2 | Control of Development in the Green Belt | Allocations DPD |
| G3 | Re-use of Buildings in the Green Belt | Allocations DPD |
| G4 | Infilling in the Green Belt | Allocations DPD |
| G5 | Infilling at major development sites in the Green Belt | Allocations DPD |
| G6 | Wallsuches Bleachworks, Horwich: A major developed site in the Green Belt | Allocations DPD |
| N2 | Nature Conservation Sites - SSSI | Core Strategy and Site Allocations DPD |
| N3 | Nature Conservation Sites - SBI and LNR | Core Strategy and Site Allocations DPD |
| N4 | Green Corridors | Core Strategy and Site Allocations DPD |
| N5 | Landscape Features | Core Strategy |
| N6 | Biodiversity | Core Strategy and Allocations DPD |
| N7 | Trees, Woodland & Hedgerows | Core Strategy |
| N8 | Trees in Conservation Areas and TPO | Covered by PPG15 |
| N9 | Species Protection | Core Strategy |
| EM2 | Incompatible Uses | Core Strategy |
| EM3 | Location of Uses | Core Strategy |
| EM4 | Contaminated Land | Core Strategy |
| EM5 | Derelict Land & Buildings | Do not continue with this policy |
| EM6 | Energy Conservation and Efficiency | Core Strategy |
| EM7 | Renewable Energy | Core Strategy |
| EM8 | Wind Power | Core Strategy |
| EM9 | Hazardous Installations | Hazardous substance regulations |

| | | |
|-------------|---|--|
| EM10 | Surface water Run-off | Core Strategy |
| EM11 | Flood Protection | Core Strategy and Site Allocations DPD |
| EM12 | Water Resources and Quality | Core Strategy |
| EM13 | Unstable Land | Covered by PPG14 |
| D2 | Design | Core Strategy |
| D3 | Landscaping | Core Strategy |
| D4 | Advertisements | Covered by PPG19 |
| D5 | Public Art | Core Strategy |
| D6 | Telecommunications | Core Strategy and PPG8 |
| D7 | Conservation Areas | Core Strategy and Site Allocations DPD |
| D8 | Demolition within Conservation Areas | Core Strategy and PPG15 |
| D9 | Shop fronts within Conservation Areas | Core Strategy and PPG15 |
| D10 | Alteration and/or Extension of Listed Buildings | Core Strategy and PPG15 |
| D11 | The Demolition of Listed Buildings | Covered by PPG15 |
| D12 | Alternative Uses of Listed Buildings | Core Strategy |
| D13 | Historic Parks and Gardens | Site Allocations DPD and PPG15 |
| D14 | Archaeology - nationally important sites | Site Allocations DPD and PPG16 |
| D15 | Archaeology | Covered by PPG16 |
| O2 | Protection of Recreational Open Space | Core Strategy and Site Allocations DPD |
| O3 | Protection of Education Recreation Facilities | Core Strategy and Site Allocations DPD |
| O4 | Provision of Open Space in New Developments | Core Strategy |
| O5 | Canals and Waterways | Core Strategy and Site Allocations DPD |
| O6 | Development at Waterside Locations | Core Strategy |
| O7 | Public Rights of Way | Covered by rights of way legislation |
| O8 | The Croal/Irwell Valley | Core Strategy and Site Allocations DPD |
| A2 | Sustainable Freight Movement | Core Strategy |
| A3 | Travel Plans | Core Strategy |
| A4 | Developer Contributions | Core Strategy |
| A5 | Road, Paths, Servicing and Car Parking | Core Strategy |
| A6 | Car Parking Standards | Core Strategy |
| A7 | Cycle and Motorcycle Parking | Core Strategy |
| A8 | Major Development | Core Strategy |
| A9 | Access for People with Disabilities | Core Strategy |
| A10 | Traffic Management and Calming | Core Strategy |
| A11 | Improvement of Bus Facilities and Services | Core Strategy |
| A12 | Improvement of Public Transport Facilities | Core Strategy and Site Allocations DPD |
| A13 | Rail Investment | Core Strategy and Site Allocations DPD |
| A14 | Park and Ride Facilities | Core strategy |
| A15 | Protection of Former Railway Lines | Site Allocations DPD |
| A16 | Pedestrians | Core Strategy |
| A17 | Cyclists | Core Strategy and Site Allocations DPD |
| A18 | The Road Network | Site Allocations DPD |
| A19 | Road Schemes and Improvements | Core Strategy and Site Allocations DPD |
| A20 | Implementation | Core Strategy |
| A21 | Planning Obligations | Core Strategy |
| H2 | Identified Housing Sites | Core Strategy and Site Allocations DPD |
| H3 | Determining Planning Applications | Core Strategy |
| H4 | Affordable Housing | Core Strategy |
| H5 | Density | Core Strategy |
| H6 | Sites for Gypsies and Travelling Showpeople | Core Strategy and Site Allocations DPD |

| | | |
|-------------|---|--|
| CP2 | Allocated School Sites | Core Strategy and Site Allocations DPD |
| CP3 | Provision for the Expansion of Education Facilities | Core Strategy and Site Allocations DPD |
| CP4 | Provision of Health and Community Facilities | Core Strategy and Site Allocations DPD |
| E2 | Office, Industrial and Warehouse Allocations | Core Strategy and Site Allocations DPD |
| E3 | Siting of Offices and Industrial Development on Unallocated land | Core Strategy |
| E4 | General Industrial and Warehousing Development on Unallocated Sites | Core Strategy |
| E5 | Protection/Regeneration of Existing Employment Areas | Core Strategy and Site Allocations DPD |
| E6 | Improvement of Existing Industrial Areas and Premises | Core Strategy |
| E7 | Working from Home | Core Strategy |
| E8 | Tourism | Core Strategy |
| S2 | Retail Allocations | Core Strategy and Site Allocations DPD |
| S3 | Retail Development on Unallocated Sites within Centres | Core Strategy and PPS6 |
| S4 | Assessment of Retail Proposals Outside Defined Centres | Core Strategy and PPS6 |
| S5 | Local Shopping Facilities | Core Strategy and PPS6 |
| S6 | Retail Warehouse Parks | Core Strategy and PPS6 |
| S7 | Hot Food Take Aways and Restaurants | Core Strategy |
| S8 | Leisure | Core Strategy and Allocations DPD |
| TC2 | Town Centre Living | Core Strategy and Site Allocations DPD |
| TC3 | Evening Economy Zone | Core Strategy (town centre) |
| TC4 | Protection of Core Shopping Areas | Core Strategy and Site Allocations DPD |
| TC5 | Mixed Use Allocations | Core Strategy) and Site Allocations DPD |
| TC6 | Commercial Allocations | Core Strategy and Site Allocations DPD |
| TC7 | Sites for Multi-Storey Car Parks | Core Strategy and Site Allocations DPD |
| TC8 | Bollings Yard Strategic Opportunity Site | Core Strategy and Site Allocations DPD |
| TC9 | Open Space Links | Core Strategy and Site Allocations DPD |
| TC10 | Restriction of New Car Parking Within Bolton Town Centre | Core Strategy and Site Allocations DPD |
| M2 | Minerals Areas of Search | Core Strategy and Site Allocations DPD/Minerals DPD |
| M3 | Determining Planning Applications | Core Strategy or Minerals DPD |
| M4 | Conditions to be applied/Legal Agreements | Core Strategy or minerals DPD |
| M5 | Aggregate Mineral Workings | Core Strategy or Minerals DPD |
| W2 | Determination of Planning Applications | Core Strategy and Greater Manchester Joint Waste DPD |
| W3 | Conditions to be applied/Legal Agreements | Greater Manchester Joint Waste DPD |

Appendix 4 Existing and Proposed Planning Policy Guidance

| Existing Planning Policy Guidance | Status at March 2009 |
|---|---|
| Existing planning control policy notes | |
| 1 Health, Well Being and Quality of Life | Adopted – February 2006 |
| 2 Space Around Dwellings | Adopted SPG-Apr 1992 |
| 3 House Extensions | Adopted SPG-Jan 2005 |
| 4 Shop Fronts | Adopted SPG-Jan 2005 |
| 6 Display of Signs & Advertisements | Adopted SPG-Apr 1992 |
| 7 Trees: Protection & Planting in New Development | Adopted SPG-Aug 2004 |
| 8 Provision for Children's' Play within New Residential Developments | Adopted SPG-Jun 1997 |
| 9 Location of Restaurants, Cafes, Public Houses, Bars & Hot Food Takeaways in Urban Areas | Adopted SPG-Jan 2005 |
| 10 Planning out Crime | Adopted SPG-Apr 1992 |
| 11 Conversion of Dwellings into Self-Contained Flats & Bedsits | Adopted SPG-Apr 1992 |
| 12 Residential & Nursing Homes for the Elderly | Adopted SPG-Apr 1992 |
| 15 The Conversion of Traditional Buildings in the Countryside | Adopted SPG-June 1997 |
| 16 Floodlighting | Adopted SPG-Jan 2005 |
| 17 Nature Conservation | Adopted SPG-Jun 1997 |
| 18 Provision for Cyclists | Adopted SPG-Aug 1995 |
| 19 Conservation Areas | Adopted SPG-Aug 1995 |
| 20 Listed Buildings | Adopted SPG-Aug 1995 |
| 21 Highways Considerations | Adopted SPG-June 1995 |
| 22 Public Art (part) | Adopted SPG-Jan 2005 |
| 22 Public Art (part) | Adopted SPG-Jan 2005 |
| 24 Working from Home | Draft Council Policy Note – March 2003 |
| 25 Telecommunications | Adopted SPG-Dec 2002 |
| 26 Affordable Housing | Interim Council Policy Note – February 2008 |
| 27 Housing Development | Adopted SPG-Aug 2003 |
| 28 Equestrian Developments | Adopted SPG-Jan 2004 |
| 29 Security Fencing Around Schools | Draft Council Policy Note – March 2002 |
| 30 Education | Adopted SPG-Jun 2005 |
| 31 Car, Cycle and Motorcycle Parking Standards | Advice Note – September 2005 |
| 32 Workplace Travel Plans | Advice Note – April 2004 |
| Other existing planning policy documents | |
| Horwich Locomotive Works | Adopted SPG – Jan 2004 |
| St Helena Development Brief: Central Street Phase | Adopted SPG – May 2005 |
| Conservation Area Character Appraisals | Council Policy Notes |
| Bolton's Green Corridors | Adopted SPG-2001 |
| A Landscape Character Appraisal for Bolton | Adopted SPG-2001 |
| West Pennine Moors Landscape Character Assessment | Adopted SPG-2001 |
| Bolton Biodiversity Action Plan | Adopted SPG-2001 |
| Bolton Cycling Strategy | Council Policy Note |

| Adopted Supplementary Planning Documents | | |
|---|------------------------|---------------|
| Title | Adoption date | Status |
| Revised Church Wharf Development Brief | Adopted February 2008 | Adopted SPD |
| Building Bolton | Adopted November 2006 | Adopted SPD |
| Sustainable Design and Construction | Adopted September 2007 | Adopted SPD |
| Merchants Quarter | Adopted March 2009 | Adopted SPD |

| Proposed Supplementary Planning Documents | | |
|--|-------------------------------|-------------------|
| Title | Proposed adoption date | Status |
| Trinity | March 2010 | SPD (see profile) |

Appendix 5 Local Development Document Profiles

| DPD 1 – CORE STRATEGY | | | |
|-----------------------|--|--------|---------------------|
| Area | Bolton District | Status | DPD |
| Content (Indicative) | The Core Strategy will set out the Council's vision and spatial strategy for future development to 2026 including development management policies, a Key Diagram and allocations for major development. | | |
| Conformity | Must conform to National Planning Policy, Regional Spatial Strategy and Statement of Community Involvement. | | |
| Milestones | Consulting statutory bodies on the scope of the Sustainability Appraisal Regulation 25 consultation | | April 2006 |
| | Publication | | Jan 2007 – Sep 2009 |
| | Submission to Secretary of State | | Jan 2010 |
| | Pre –hearing meeting | | Apr 2010 |
| | Commencement of examination hearing | | Jun 2010 |
| | Receipt of Inspector's Report | | Aug 2010 |
| | Adoption | | Dec 2010 |
| | | | Mar 2011 |
| Production | Lead Organisation: Development & Regeneration Department Management Arrangements: Drafts to be approved by Executive Member for Development & Regeneration Resources: Spatial Planning and Planning Research Teams Community & Stakeholder Involvement: Consultation with general bodies. LSP to provide key link to community consultation process including Area Forum meetings and focus groups. | | |
| Monitoring and Review | The Annual Monitoring Report will examine contextual issues and whether development is conforming to the Strategy. | | |

| DPD 2 – ALLOCATIONS DPD | | | |
|--------------------------------|--|---------------|---|
| Area | Bolton District | Status | DPD |
| Content (Indicative) | The Allocations DPD will set out land allocations for a range of relevant future uses which may include housing, employment, mixed use, retail development and community facilities and it will also identify areas of protection such as Green Belt, Conservation Areas etc. | | |
| Conformity | Must conform to National Planning Policy, Regional Spatial Strategy, Core Strategy and Statement of Community Involvement. | | |
| Milestones | Consulting statutory bodies on the scope of the Sustainability Appraisal Regulation 25 consultation Publication Submission to Secretary of State Pre – examination meeting Commencement of examination Receipt of Inspector’s Report Adoption | | March 2009 Apr 2009 - Jan 2011 Apr 2011 Jul 2011 Sep 2011 Nov 2011 Mar 2012 May 2012 |
| Production | Lead Organisation: Development & Regeneration Department Management Arrangements: Drafts to be approved by Executive Member for Development & Regeneration Resources: Spatial Planning and Planning Research Teams Community & Stakeholder Involvement: Consultation with general bodies. LSP to provide key link to community consultation process including Area Forum meetings and focus groups. | | |
| Monitoring and Review | The Annual Monitoring Report will examine contextual issues and whether development is conforming to the Strategy. | | |

| DPD 3 – THE GREATER MANCHESTER JOINT WASTE DEVELOPMENT PLAN DOCUMENT (“the JWDPD”) | | |
|---|--|---|
| Area | Bolton Metropolitan Borough Council, Bury Metropolitan Borough Council, Manchester City Council, Oldham Metropolitan Borough Council, Rochdale Metropolitan Borough Council, Salford City Council, Stockport Metropolitan Borough Council, Tameside Metropolitan Borough Council, Trafford Metropolitan Borough Council and Wigan Metropolitan Borough Council. | Status Joint DPD |
| Content (Indicative) | <p>Role and Subject. The JWDPD will:</p> <ul style="list-style-type: none"> • Set out the vision and spatial objectives relating to waste for the Greater Manchester area; • Develop the main policies and broad framework for implementation and monitoring in the authorities’ annual monitoring reports (AMRs); • Detail how the Planning Authorities will meet their contribution to delivering the identified needs of the region for all waste streams, within acceptable social, economic and environmental parameters. • Set out how waste management will be considered alongside other spatial concerns, recognising the positive contribution waste management can make to the development of sustainable communities; • Plan for the provision of new capacity based on clear policy objectives, robust analysis of available data and information, and an appraisal of options; • Set out broad and detailed criteria based policies for the plan area; and • Allocate sites/areas for waste management facilities. | |
| Conformity | The JWDPD will be in conformity with European legislation, National Planning Guidance, the Regional Spatial Strategy for the North West and each of the planning authority’s Core Strategy Development Plan Documents. The JWDPD will also have regard to the Sustainable Community Strategies of the ten Greater Manchester authorities. | |
| Milestones | <ul style="list-style-type: none"> • Commencement of Production • Regulation 25 consultation • Publication • Submission to Secretary of State • Pre-Examination Meeting • Commencement of Hearing • Receipt of Inspector’s Report • Estimated Date for Adoption | <p>September 2006</p> <p>September 2006 – January 2010¹</p> <p>November 2010</p> <p>February 2011</p> <p>April 2011</p> <p>June 2011</p> <p>October 2011</p> <p>January 2012²</p> |
| Production | <p>Organisational Lead</p> <p>Work on the JWDPD will be co-ordinated and managed by the Greater Manchester Geological Unit (GMGU) on behalf of each planning authority.</p> | |

¹ During the Regulation 25 consultation period a Stage 1 Issues and Options consultation was undertaken in May 2007 and Issues and Options consultation on Built Facilities (Oct – Nov 2008). There will be a further consultation on Residual Waste Disposal (Mar – Apr 2009) in order to evaluate alternative strategies and establish the most appropriate strategy to take forward. A targeted consultation on the JWDPD Preferred Options will then be undertaken in December 2009 – January 2010.

² Timescales for adoption have been prepared on the basis that all districts will agree on a common date for formal adoption of the plan.

| | |
|-----------------------|---|
| Production | <p>Political Management</p> <p>A Joint Committee has been established to act as an Executive, with responsibility for all documents except those prepared for submission and adoption which must be agreed by each planning authority's Full Council. The Joint Committee will be supported by a Steering Group consisting of officers from each of the authorities as well as the two Waste Disposal Authorities.</p> |
| Production | <p>Resources</p> <p>GMGU will have responsibility for co-ordinating and managing the JWDPD preparation, also drawing on contributions from each of the ten Greater Manchester Councils, the Association of Greater Manchester Authorities (AGMA) Policy Unit as well as Wigan and Greater Manchester Waste Disposal Authorities. Additional consultancy support will also be required to assist the work carried out by GMGU.</p> <p>Staff resources are specifically referred to in the risk assessment of the JWDPD's production below. Staff turnover, absence, and the inability to recruit are key risks that could leave the team under resourced. Progress on document production will be monitored against the timetables set out in this LDS timetable and appropriate action will be taken if significant slippage occurs.</p> |
| Production | <p>Community & Stakeholder Involvement</p> <p>Consultation on the JWDPD will be carried out in accordance with each of the planning authority's Statement of Community Involvement (SCI). To ensure conformity with the SCIs, a Consultation Strategy has been prepared which sets out detailed methods for engaging with key stakeholders.</p> |
| Evidence Base | <p>The following documents represent the main existing evidence base for the JWDPD:</p> <p>The Municipal Waste Management Strategy for Greater Manchester (2006) Wigan's Municipal Solid Waste Management Strategy (2006) Reports and Statistics of the Environment Agency (annual) Reports and Statistics of the Regional Technical Advisory Body on Waste Matters, and the Regional Waste Strategy (September 2004) Reports and Statistics of the Regional Aggregate Working Party (annual) Joint Waste Development Plan Document for Greater Manchester – Needs Assessment Report (December 2007) ODPM Survey on Arisings of Construction, Demolition and Excavation Waste (2003) (Symonds Report)</p> |
| Monitoring and Review | <p>Annual monitoring will be carried out by GMGU as they are the most appropriate body to undertake this work. A report will be produced and this will be incorporated in to each authority's Annual Monitoring Report. The document will contain details on the progress of the JWDPD, and make any necessary amendments to the LDS timetable. Monitoring of the JWDPD will be carried in accordance with each of the 10 Greater Manchester Authorities and the Regulations.</p> |
| Risk Assessment | <p>Every effort will be made to ensure that the programme set out for the JWDPD will be fulfilled; nevertheless there are clearly various risks which could potentially impact upon the ability to adhere to this timetable. The following table identifies these possible risks, the problems that could ensue and the mitigation measures that might be taken to minimise their effect on the timetable.</p> |

| Risk | Problem | Mitigation Measure |
|--|--|--|
| Programme slippage | Key milestones may not be met, delaying the delivery of the JWDPD | GMGU have identified the resource requirements of producing the plan and have recruited staff to assist with this. In addition, consultants have been contracted to ensure delivery of key documents required for the preparation of the JWDPD. |
| Staff absence/turnover | May leave the JWDPD under resourced and delay production | <p>It is difficult to account for this risk. Staff will be drawn from the planning team within GMGU. Allocation of responsibility across the planning team will ensure consistency in the absence/loss of a member of staff.</p> <p>The effect of vacancies in the project team will be minimised by striving to ensure a quick replacement. Furthermore Urban Vision has a team of policy planners who could be drawn upon to fill any capacity gaps that arise. Nevertheless there is a recognized difficulty in recruiting experienced waste planners; consequently emphasis can be based on experience and knowledge of the development plan system.</p> |
| Political Delay | Due to the unique nature of the production arrangement of this JWDPD, it is required to gain approval at key stages through the 10 authorities. Therefore there is the risk that key dates may not be met due to timings of Full Council meetings. | The Joint Committee and the JWDPD Steering Group have been established to ensure that political commitment from each authority is gained from the outset and to raise the importance of meeting key dates for council approval. |
| One or more Authorities withdraws from the Joint Working arrangements | An authority may choose to withdraw from the arrangements to produce the JWDPD as a result of change of circumstances or as a result of disagreements occurring regarding plan production. | Every effort will be made to maintain good working relations throughout plan production. However where an authority chooses to withdraw from joint working arrangements, the established Local Agreement allows the remaining authorities to reserve the right to continue to work together to develop a JWDPD for the remaining sub-region area. |
| Capacity of the Planning Inspectorate | The resourcing of this body is outside our control. | This timetable and correspondence and meetings with the Planning Inspectorate should ensure that they are fully aware of the programme for the JWDPD. |
| Further changes to the planning system | Delay due to changes in plan-making requirements / procedures. | It is not possible to plan for further changes to the planning system. However, GMGU will endeavour to deal with new requirements with minimum disruption to the timetable. |

| | | |
|--|--|--|
| Length of the independent examination | Although PINs have issued suggested timings for the post-submission stage of DPD production it is recognised that it may be difficult to precisely quantify the length of the examination process. | GMGU will endeavour to minimise the volume of issues to be resolved at examination, through ensuring the JWDPD is founded upon wide pre-submission consultation and a robust and credible evidence base. |
| DPD found to be unsound / legal challenge | Significant amendments would need to be made to the timetable if the JWDPD was found to be unsound. | The risk of the JWDPD being found to be unsound or subject of a legal challenge will be minimised by working closely with the Government Office for the North West to ensure that the chain of conformity is achieved and correct procedures followed. Every effort will also be made to ensure that the JWDPD is realistic, able to be implemented, founded upon a robust and credible evidence base and takes appropriate account of the views of local communities and others with a stake in the area. |

| DPD 4 – THE GREATER MANCHESTER JOINT MINERALS DEVELOPMENT PLAN DOCUMENT (“the JMDDP”) | | |
|--|--|---|
| Area | Bolton Metropolitan Borough Council, Bury Metropolitan Borough Council, Manchester City Council, Oldham Metropolitan Borough Council, Rochdale Metropolitan Borough Council, Salford City Council, Stockport Metropolitan Borough Council, Tameside Metropolitan Borough Council, Trafford Metropolitan Borough Council and Wigan Metropolitan Borough Council. | Status Joint DPD |
| Content | <p>Role and Subject. The JMDDP will:</p> <ul style="list-style-type: none"> • Set out the strategic aims and objectives relating to minerals for the Greater Manchester area; • Develop the main policies and broad framework for implementation and monitoring; • Detail how the Planning Authorities will meet their contribution to delivering the identified needs of the region for all minerals, within acceptable social, economic and environmental parameters; • Set out how minerals will be considered alongside other spatial concerns, recognising the importance of the prudent use of minerals in preserving natural resources; • Safeguard existing rail head, wharfage, and other storage and handling facilities and identify future sites to accommodate such facilities; • Safeguard rail and water-served sites for concrete batching, coated materials, and the reprocessing of recycled and secondary materials into aggregate, and, where appropriate, identify future sites for these uses; • Indicate areas where future working might be sustainable; • Identify Mineral Safeguarding Areas (MSAs); • Include a key diagram detailing sites identified within the plan area, and a set of 10 inset maps, one for each district, to be included within their individual proposals maps; and • Set out detailed criteria based and site specific policies for the plan area. | |
| Conformity | The JMDDP will be written to conform to National Planning Guidance, Regional Spatial Strategy and each of the District’s Core Strategy Development Plan Documents. | |
| Milestones | <ul style="list-style-type: none"> • Consultation on Sustainability Appraisal Scoping Report • Regulation 25 consultation³ • Publication of the JMDDP⁴ • Submission to Secretary of State • Pre-Examination Meeting • Examination • Receipt of Binding Inspector’s Report • Estimated Date for Adoption | <p>November – December 2009</p> <p>November 2009 – November 2010</p> <p>July – August 2011</p> <p>December 2011</p> <p>February 2012</p> <p>April 2012</p> <p>August 2012</p> <p>October 2012</p> |

³ Regulation 25 consultation will include the opportunity in February/March 2010 to comment on a series of Topic Papers, covering areas such as safeguarding mineral resources, meeting the need for mineral extraction and Development Management. Following this, in September/October 2010, there will be an opportunity to comment on the preferred approach towards planning for minerals.

⁴ This includes a statutory 6 week consultation in line with Regulation 28.

| | |
|-----------------------|---|
| Production | Organisational Lead Work on the JMDPD will be co-ordinated and managed by the Greater Manchester Geological Unit (GMGU) on behalf of each District. |
| Production | Political Management A Joint Committee will be established to act as an Executive, with responsibility for approval of the document except at publication and adoption, at which point the JMDPD must be agreed by each District's Full Council, with delegated approval to the Joint Committee at submission. The Joint Committee will be supported by a Steering Group consisting of officers from each of the Districts. |
| Production | Resources GMGU will have responsibility for co-ordinating and managing the JMDPD preparation, also drawing on contributions from each of the ten Greater Manchester Councils and the Association of Greater Manchester Authorities (AGMA) Policy Unit. |
| Production | Community & Stakeholder Involvement Consultation on the JMDPD will be carried out in accordance with each of the District's Statement of Community Involvement (SCI). To ensure conformity with the SCIs, the existing Consultation Strategy for the JMDPD will be updated in light of revisions to the District SCIs. |
| Evidence Base | The following documents represent the main existing evidence base for minerals: <ul style="list-style-type: none"> - RAWP Annual Monitoring Report 2008 - AMRI Survey - NW Regional Study in to arisings of Construction, Demolition and Excavation Waste - AGMA Report: Investigation into Minerals Resources in Greater Manchester - ODPM Survey on Arisings of Construction, Demolition and Excavation Waste (2005) (Symonds Report) |
| Monitoring and Review | In respect of the JMDPD, annual monitoring will be carried out by GMGU as they are the most appropriate body to undertake this work. A report will be produced and this will be incorporated into each district's Annual Monitoring Report. The document will contain details on the progress of the JMDPD, and make any necessary amendments to the LDS timetable. Monitoring of the JMDPD will be carried in accordance with each of the 10 Greater Manchester Authorities and the Regulations. |
| Risk Assessment | Every effort will be made to ensure that the programme set out for the JMDPD will be fulfilled, but clearly there are various risks to different aspects of it. The following table identifies these possible risks, the problems that could ensue and the mitigation measures that might be taken to alleviate them. |

| Risk | Problem | Mitigation Measure |
|-------------------------------|---|---|
| Staff absence/turnover | May leave the JMDPD under resourced and delay production. | Staff will be drawn from the planning team within GMGU. The Plan will be produced by a team of people who will share knowledge on production issues and will be able to provide cover. Furthermore as part of Urban Vision, staff with significant policy making experience can be called on, if necessary. |

| | | |
|--|--|---|
| Political Delay/ programme slippage | Due to the unique nature of the production arrangement of this JMDPD, it is required to gain approval at key stages through the 10 authorities. Therefore there is the risk that key dates may not be met due to timings of Full Council meetings. | The Joint Committee and the JMDPD Steering Group have been established to ensure that political commitment from each authority is gained from the outset and to raise the importance of meeting key dates for council approval. |
| One or more Authorities withdraws from the Joint Working arrangements | An authority may choose to withdraw from the arrangements to produce the JMDPD as a result of change of circumstances or as a result of disagreements occurring regarding plan production. | Every effort will be made to maintain good working relations throughout plan production. However where an authority chooses to withdraw from joint working arrangements, the established Local Agreement allows the remaining authorities to reserve the right to continue to work together to develop a JMDPD for the remaining sub-region area. |
| General Election and local elections | Risk of delay due to restrictions on consultations and approval of plans in approach to elections. | For local elections, ensure approvals process and consultations are arranged outside of this period. Influence of general election may depend on date and could delay the timetable. |

| SPD - Trinity | | | |
|-----------------------|---|--------|----------------|
| Area | Trinity and Interchange area | Status | SPD |
| Content (Indicative) | Brief to guide the development of the Trinity and Interchange area (including the Bollings Yard UDP allocation) of Bolton town centre. | | |
| Conformity | Must conform to National Planning Policy, Regional Spatial Strategy, Unitary Development Plan (Policy TC8). The Council will protect the following site, as shown on the Town Centre Inset Map, for development as a strategic town centre development opportunity) and Statement of Community Involvement. | | |
| Milestones | Preparation of draft supplementary planning document and sustainability appraisal report. | | March 2007 |
| | Draft supplementary planning document and sustainability appraisal report issued for public participation as required by Reg 17. | | Oct – Nov 2007 |
| | Authority consideration of consultation Representations. | | Feb 2010 |
| | Adoption and publication of document. | | March 2010 |
| Production | Lead Organisation: Development & Regeneration Department Management Arrangements: To be approved by Executive Member for Development & Regeneration Resources: Regeneration and Economic Development Division, Community & Stakeholder Involvement: Consultation with public, land owners etc. | | |
| Monitoring and Review | Regeneration and Economic Development Division will monitor implementation of development brief. | | |

APPENDIX 6 - LOCAL DEVELOPMENT DOCUMENTS SUMMARY TABLE

| Document Title | Chain of Conformity | Consulting statutory bodies | Regulation 25 consultation | Publication | Submission to Secretary of State | Pre-hearing meeting | Commencement of hearing | Receipt of Inspector's report | Adoption |
|------------------------|--|-----------------------------|-------------------------------|-----------------|----------------------------------|---------------------|-----------------------------|-------------------------------|----------|
| Core Strategy | PPS, RSS, SCI | April 2006 | January 2007 - September 2009 | Jan 2010 | April 2010 | June 2010 | Aug 2010 | Dec 2010 | Mar 2011 |
| Allocations DPD | PPS, RSS, Core Strategy & SCI | March 2009 | Nov 2010 – Jan 2011 | Apr 2011 | Jul 2011 | Sep 2011 | Nov 2011 | March 2012 | May 2012 |
| GM Joint Waste Plan | PPS, RSS & Gtr M/C UDP/LDFs District's Core Strategy & DPDs. | Sept 2006 | Sept 2006 – Jan 2010 | Nov 2010 | Feb 2011 | April 2011 | June 2011 | Oct 2011 | Jan 2012 |
| GM Joint Minerals Plan | PPS, RSS & Gtr M/C UDP/LDFs District's Core Strategy & DPDs. | Nov – Dec 2009 | Nov 2009 – Nov 2010 | July – Aug 2011 | Dec 2011 | Feb 2012 | April 2012 | Aug 2012 | Oct 2012 |
| Proposals Map | Core Strategy, RSS & adopted DPD | | | | | | Update on each DPD adoption | | |

APPENDIX 6 - LOCAL DEVELOPMENT DOCUMENTS SUMMARY TABLE

| Document Title | SPD | Subject | Chain of Conformity | Draft Prep & SA Report | Public Participation | Consideration of Reps | Adoption & Publication |
|-----------------------|------------|-------------------|----------------------------|-----------------------------------|-----------------------------|------------------------------|-----------------------------------|
| Trinity | SPD | Development Guide | PPS, RSS, UDP/LDF | March 2007 | October – November 2007 | February 2010 | March 2010 |

